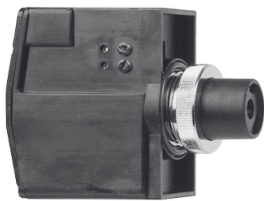


Product datasheet

Specifications



non booted push button, Harmony XAC, control circuit, black, non booted, 1NO + 1NC at start of travel, 1NO at end of travel, 0...15V DC

XEAC25361

Main

Range Of Product	Harmony XAC
Product Or Component Type	Non booted push-button
Control Station Name	XACB XACM
Electrical Circuit Type	Control circuit
[Us] Rated Supply Voltage	0...15 V
Control Circuit Type	DC
Operating Travel	11 mm

Complementary

Contacts Type And Composition	1 NC + 1 NO at start of travel 1 NO at end of travel
Current Consumption	< 15 mA
Connections - Terminals	Terminal connectors, 1 x 2.5 mm ² Terminal connectors, 2 x 1.5 mm ²
Operating Force	4 N at start of travel 9 N at end of travel
Mechanical Durability	1000000 cycles
[Ithe] Conventional Enclosed Thermal Current	6 A
[Ui] Rated Insulation Voltage	250 V (pollution degree 3) conforming to IEC 60947-1
Rated Power In Va	30 VA AC-15 for 1000000 cycles at 110 V 50/60 Hz conforming to IEC 60947-5-1 appendix C 30 VA AC-15 for 1000000 cycles at 230 V 50/60 Hz conforming to IEC 60947-5-1 appendix C 30 VA AC-15 for 1000000 cycles at 48 V 50/60 Hz conforming to IEC 60947-5-1 appendix C
Rated Power In W	DC-13: 12 W 110 V inductive conforming to IEC 60947-5-1 appendix C 1000000 cycles DC-13: 48 W 48 V inductive conforming to IEC 60947-5-1 appendix C 1000000 cycles
Net Weight	0.065 kg

Environment

Standards	IEC 60947-5-1 EN 60947-5-1
Ambient Air Temperature For Operation	-25...70 °C
Ambient Air Temperature For Storage	-40...70 °C

Disclaimer: This documentation is not intended as a substitute for and is not to be used for determining suitability or reliability of these products for specific user applications

Ip Degree Of Protection	IP65 conforming to IEC 60529
-------------------------	------------------------------

Packing Units

Unit Type Of Package 1	PCE
Number Of Units In Package 1	1
Package 1 Height	4.3 cm
Package 1 Width	6.2 cm
Package 1 Length	6.7 cm
Package 1 Weight	98.0 g

Contractual warranty

Warranty	18 months
----------	-----------

Sustainability

Green Premium™ label is Schneider Electric's commitment to delivering products with best-in-class environmental performance. Green Premium promises compliance with the latest regulations, transparency on environmental impacts, as well as circular and low-CO₂ products.

Guide to assessing product sustainability is a white paper that clarifies global eco-label standards and how to interpret environmental declarations.

[Learn more about Green Premium >](#)

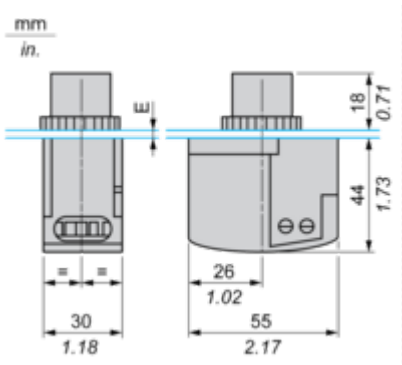
[Guide to assess a product's sustainability >](#)

Well-being performance

✓	Reach Free Of Svhc	
✓	Toxic Heavy Metal Free	
✓	Mercury Free	
✓	Rohs Exemption Information	Yes
Reach Regulation	REACH Declaration	
Eu Rohs Directive	Pro-active compliance (Product out of EU RoHS legal scope) EU RoHS Declaration	
China Rohs Regulation	China RoHS declaration	
Weee	The product must be disposed on European Union markets following specific waste collection and never end up in rubbish bins	

Dimensions Drawings

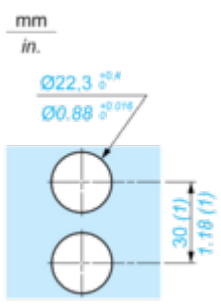
Dimensions



E Support panel thickness: 1 mm to 3.5 mm / 0.04 in. to 0.14 in.

Mounting and Clearance

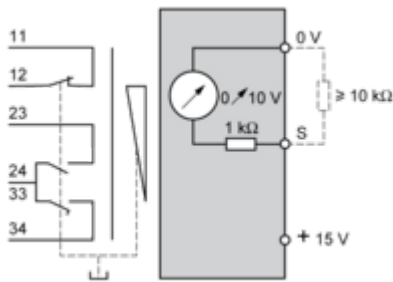
Panel Cut-Out



(1) Minimum fixing centres between 2 operators.

Connections and Schema

Output Connection Diagram

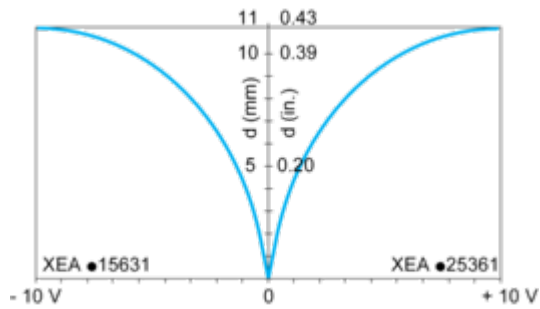


Performance Curves

Analogue Circuit Characteristics

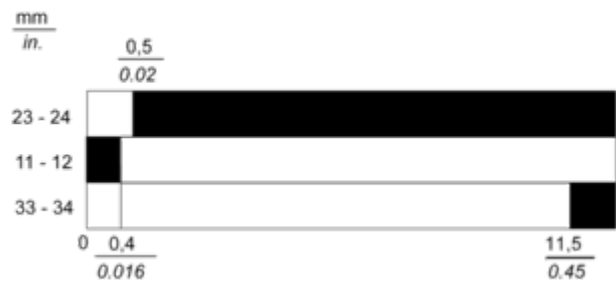
Analogue Signal Output Curves

With 15 V supply voltage



d Distance travelled by the pushbutton operator
Power supply voltage = 15 V, output voltage = 10 V (if supply voltage < 15 V, output voltage < 10 V)

Contact State versus Distance Travelled by the Pushbutton Operator



 Contact Closed
 Contact Open