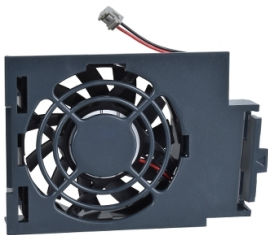


# Product datasheet

Specifications



Wear part, fan for variable speed drive, Altivar 32, Altivar Machine 320, from 1.1 to 4kW, single and three phase

VZ3V32B100

❗ Discontinued

❗ Discontinued on: 11 Jan 2021

## Main

Accessory / Separate Part Type	Fan kit
Product Or Component Type	Fan
Accessory / Separate Part Category	Cooling accessory

## Complementary

Range Compatibility	Altivar 32 Altivar 320
Accessory / Separate Part Destination	Variable speed drive
Kit Composition	Fan Mounting bracket Instruction sheet
Product Compatibility	Variable speed drive ATV32 at 1.1 kW, 200...240 V single phase Variable speed drive ATV32 at 1.5 kW, 200...240 V single phase Variable speed drive ATV32 at 2.2 kW, 200...240 V single phase Variable speed drive ATV32 at 2.2 kW, 380...500 V three phase Variable speed drive ATV32 at 3 kW, 380...500 V three phase Variable speed drive ATV32 at 4 kW, 380...500 V three phase Variable speed drive ATV320...B at 1.1 kW, 200...240 V single phase Variable speed drive ATV320...B at 1.5 kW, 200...240 V single phase Variable speed drive ATV320...B at 2.2 kW, 200...240 V single phase Variable speed drive ATV320...B at 2.2 kW, 380...500 V three phase Variable speed drive ATV320...B at 3 kW, 380...500 V three phase Variable speed drive ATV320...B at 4 kW, 380...500 V three phase
Net Weight	0.19 kg

## Packing Units

Unit Type Of Package 1	PCE
Number Of Units In Package 1	1
Package 1 Height	7.000 cm
Package 1 Width	17.000 cm
Package 1 Length	23.000 cm
Package 1 Weight	191.000 g
Unit Type Of Package 2	P06
Number Of Units In Package 2	56
Package 2 Height	75.000 cm
Package 2 Width	60.000 cm
Package 2 Length	80.000 cm

Disclaimer: This documentation is not intended as a substitute for and is not to be used for determining suitability or reliability of these products for specific user applications

---

Package 2 Weight	22.520 kg
------------------	-----------

## Sustainability



**Green Premium™ label** is Schneider Electric’s commitment to delivering products with best-in-class environmental performance. Green Premium promises compliance with the latest regulations, transparency on environmental impacts, as well as circular and low-CO<sub>2</sub> products.

**Guide to assessing product sustainability** is a white paper that clarifies global eco-label standards and how to interpret environmental declarations.

[Learn more about Green Premium >](#)

[Guide to assess a product’s sustainability >](#)

## Well-being performance

 Reach Free Of Svhc	
 Rohs Exemption Information	<a href="#">Yes</a>
Reach Regulation	<a href="#">REACH Declaration</a>
Eu Rohs Directive	Pro-active compliance (Product out of EU RoHS legal scope) <a href="#">EU RoHS Declaration</a>
China Rohs Regulation	<a href="#">China RoHS declaration</a> Pro-active China RoHS declaration (out of China RoHS legal scope)

Mounting and Clearance

Fan Replacement

1	Push the locking tab.
2	Disconnect the plug-in connector and remove the fan.

