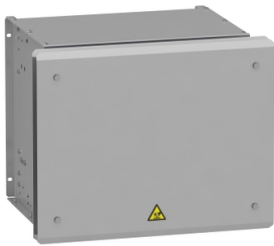


# Product datasheet

Specifications



braking resistor, Altivar, 28Ohms,  
5.1kW, IP23

VW3A7752

## Main

Range Compatibility	Altivar Process ATV900 Altivar Machine ATV340
Product Or Component Type	Braking resistor
Ohmic Value	28 Ohm
[Ue] Rated Operational Voltage	24 V DC 250 V AC

## Complementary

Product Compatibility	Variable speed drive ATV930 wall mount 11 kW 380...480 V severe cycle Variable speed drive ATV930 wall mount 15 kW 380...480 V severe cycle Variable speed drive ATV930 wall mount 4 kW 200...240 V severe cycle Variable speed drive ATV950 wall mount 11 kW 380...480 V severe cycle Variable speed drive ATV950 wall mount 15 kW 380...480 V severe cycle Variable speed drive ATV340 7.5 kW 380...480 V severe cycle Variable speed drive ATV340 11 kW 380...480 V severe cycle Variable speed drive ATV930 15 kW 500...690 V severe cycle Variable speed drive ATV930 18.5 kW 500...690 V severe cycle Variable speed drive ATV930 20 hp 600 V severe cycle Variable speed drive ATV930 25 hp 600 V severe cycle
Duty Cycle	Severe cycle (heavy duty) <54 s braking with 100 % braking torque for a 120 s cycle Severe cycle (heavy duty) <6 s braking with 165 % braking torque for a 120 s cycle
Average Power Available	5.1 kW at 50 °C
Electrical Connection	terminal, connection capacity: <= 2.5 mm² / AWG 12 for temperature control switch M6 bar wire for drive
Protection Type	Thermal protection via drive or temperature control switch at 120 °C
Width	540 mm
Height	485 mm
Depth	650 mm
Net Weight	27 kg

## Environment

Ip Degree Of Protection	IP23
Ambient Air Temperature For Storage	-25...70 °C
Ambient Air Temperature For Operation	0...50 °C

## Packing Units

Unit Type Of Package 1	PCE
Number Of Units In Package 1	1

Disclaimer: This documentation is not intended as a substitute for and is not to be used for determining suitability or reliability of these products for specific user applications

Package 1 Height	58.000 cm
Package 1 Width	58.000 cm
Package 1 Length	71.000 cm
Package 1 Weight	23.900 kg

# Sustainability

**Green Premium™ label** is Schneider Electric’s commitment to delivering products with best-in-class environmental performance. Green Premium promises compliance with the latest regulations, transparency on environmental impacts, as well as circular and low-CO<sub>2</sub> products.

**Guide to assessing product sustainability** is a white paper that clarifies global eco-label standards and how to interpret environmental declarations.

[Learn more about Green Premium >](#)

[Guide to assess a product’s sustainability >](#)

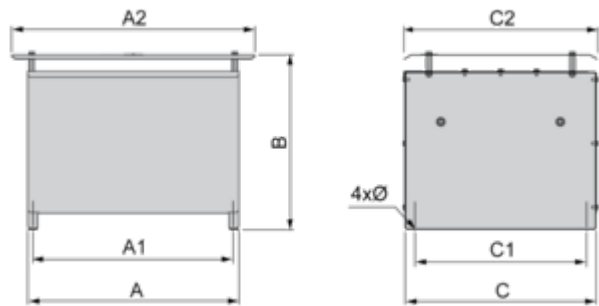
## Well-being performance

✓	Reach Free Of Svhc	
✓	Toxic Heavy Metal Free	
✓	Mercury Free	
✓	Rohs Exemption Information	Yes
Reach Regulation		<a href="#">REACH Declaration</a>
Eu Rohs Directive		Pro-active compliance (Product out of EU RoHS legal scope) <a href="#">EU RoHS Declaration</a>
China Rohs Regulation		<a href="#">China RoHS declaration</a>

Dimensions Drawings

Dimensions

Right Side and Front View



Dimensions in mm

A	B	C	A1	C1	A2	C2	Ø
530	485	485	510	380	650	540	9 x 12

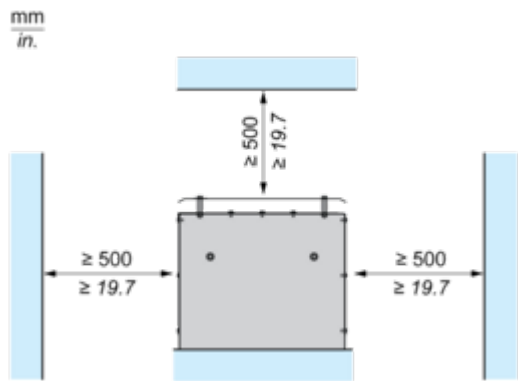
Dimensions in in.

A	B	C	A1	C1	A2	C2	Ø
20.87	19.09	19.09	20.08	14.96	25.59	21.26	0.35 x 0.47

Mounting and Clearance

Clearances

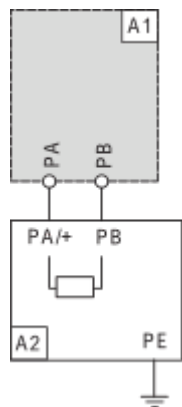
---



Connections and Schema

Recommended Schema

1 Braking Resistor

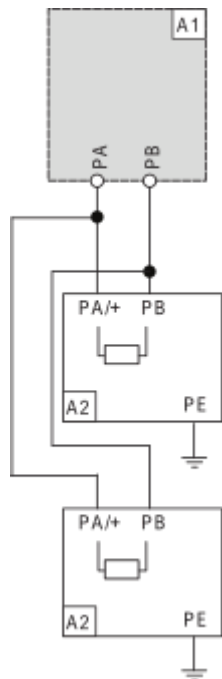


A1 : Drive or external braking unit

A2 : Braking resistor

PA, PB : Bus DC

2 Braking Resistors



A1 : Drive or external braking unit

A2 : Braking resistor

PA, PB : Bus DC