

# Product datasheet

Specifications



output dv dt filter, Altivar, for variable speed drive, 4 to 15kW, 25A, IP20

VW3A5303

## Main

|                              |   |
|------------------------------|---|
| Product Or Component Type    | Dv/dt filter  |
| Range Compatibility          | Easy Altivar 610<br>Altivar Process ATV900<br>Altivar Process ATV600<br>Altivar Machine ATV340  |
| Product Specific Application | Output filter   |
| [In] Rated Current           | 25 A  |
| Product Compatibility        | ATV630 variable speed drive wall mount - 7.5 kW, 380...480 V<br>ATV630 variable speed drive wall mount - 11 kW, 380...480 V<br>ATV630 variable speed drive wall mount - 4 kW, 200...240 V<br>ATV650 variable speed drive wall mount - 7.5 kW, 380...480 V<br>ATV650 variable speed drive wall mount - 11 kW, 380...480 V<br>ATV610 variable speed drive - 7.5 kW, 380...415 V<br>ATV610 variable speed drive - 11 kW, 380...415 V<br>ATV610 variable speed drive - 15 kW, 380...415 V<br>ATV930 variable speed drive wall mount - 7.5 kW, 380...480 V<br>ATV930 variable speed drive wall mount - 11 kW, 380...480 V<br>ATV930 variable speed drive wall mount - 4 kW, 200...240 V<br>ATV950 variable speed drive wall mount - 7.5 kW, 380...480 V<br>ATV950 variable speed drive wall mount - 11 kW, 380...480 V |
| Nedded Quantity              | 1   |
| Electrical Connection        | Terminal block, connection capacity: 10 mm² / AWG 8   |

## Complementary

|                                       |   |
|---------------------------------------|---|
| Maximum Motor Cable Length            | 500 m unshielded cable<br>300 m shielded cable  |
| Dv/Dt                                 | 3000 V/µs max at 200...240 V<br>3000 V/µs max at 380...480 V                              |
| Thermal Losses                        | 49 W at 4 kHz   |
| Maximum Drive Output Frequency        | 100 Hz  |
| Ambient Air Temperature For Operation | -10...50 °C (without current derating)<br>50...60 °C (with current derating 1.5 % per °C) |
| Operating Altitude                    | 0...1000 m without current derating<br>1000...4000 m with current derating 1 % per 100 m  |
| Width                                 | 295 mm  |
| Height                                | 535 mm  |
| Depth                                 | 215 mm  |
| Net Weight                            | 12 kg   |

## Environment

Disclaimer: This documentation is not intended as a substitute for and is not to be used for determining suitability or reliability of these products for specific user applications

|                                     |                           |
|-------------------------------------|---------------------------|
| Ip Degree Of Protection             | IP20                      |
|                                     | IP21 (with kit VW3A53902) |
| Ambient Air Temperature For Storage | -40...70 °C               |

## Packing Units

|                              |           |
|------------------------------|-----------|
| Unit Type Of Package 1       | PCE       |
| Number Of Units In Package 1 | 1         |
| Package 1 Height             | 52.000 cm |
| Package 1 Width              | 60.000 cm |
| Package 1 Length             | 80.000 cm |
| Package 1 Weight             | 26.000 kg |

# Sustainability





**Green Premium™ label** is Schneider Electric’s commitment to delivering products with best-in-class environmental performance. Green Premium promises compliance with the latest regulations, transparency on environmental impacts, as well as circular and low-CO<sub>2</sub> products.

**Guide to assessing product sustainability** is a white paper that clarifies global eco-label standards and how to interpret environmental declarations.

[Learn more about Green Premium >](#)

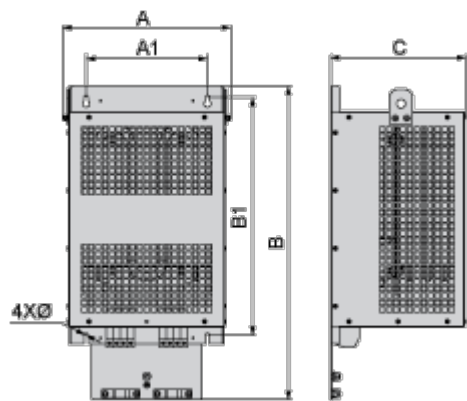
[Guide to assess a product’s sustainability >](#)

## Well-being performance

|   |                            |   |
|---|----------------------------|---|
|  | Reach Free Of Svhc         |   |
|  | Toxic Heavy Metal Free     |   |
|  | Mercury Free               |   |
|  | Rohs Exemption Information | Yes   |
|   |                            |   |
| Reach Regulation  |                            | <a href="#">REACH Declaration</a>   |
|   |                            |   |
| Eu Rohs Directive   |                            | Pro-active compliance (Product out of EU RoHS legal scope)<br><a href="#">EU RoHS Declaration</a> |
|   |                            |   |
| China Rohs Regulation   |                            | <a href="#">China RoHS declaration</a>  |

Dimensions Drawings

Dimensions



Dimensions in mm

| A   | B   | C   | A1  | B1  | Ø |
|-----|-----|-----|-----|-----|---|
| 285 | 520 | 215 | 210 | 411 | 7 |

Dimensions in in.

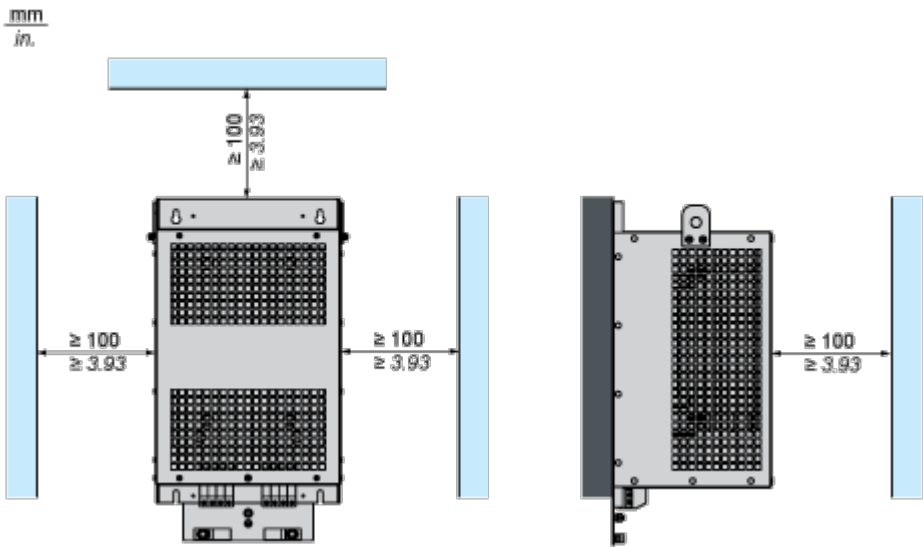
| A    | B    | C   | A1  | B1   | Ø    |
|------|------|-----|-----|------|------|
| 11.2 | 20.5 | 8.5 | 8.3 | 16.2 | 0.28 |

Mounting and Clearance

Mounting and Clearance

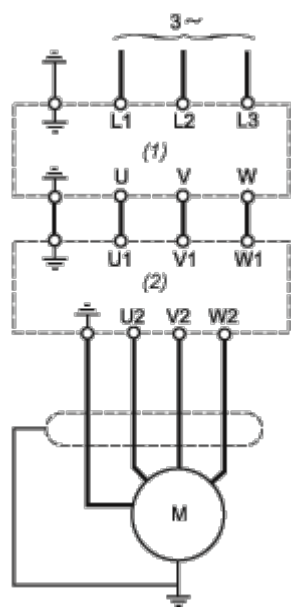


(1) Filter



Connections and Schema

Recommended Schema



- (1) Drive
- (2) Filter