

Product datasheet

Specifications



discrete input module, Modicon X80,
8 inputs, 200 to 240V AC

BMXDAl0805

Main

Range Of Product	Modicon X80
Product Or Component Type	Discrete input module
Discrete Input Number	8
Discrete Input Type	Isolated
Input Type	Capacitive
Discrete Input Voltage	200...240 V AC
Discrete Input Current	10.4 mA

Complementary

Input Compatibility	With 2-wire/3-wire proximity sensors conforming to IEC 60947-5-2 With 2-wire/3-wire proximity sensors conforming to IEC 61131-2 Type 2
Network Frequency	50/60 Hz
Network Frequency Limits	47...63 Hz
Sensor Power Supply	170...264 V
Current State 1 Guaranteed	>= 6 mA
Current State 0 Guaranteed	<= 4 mA
Input Impedance	21000 Ohm
Insulation Resistance	> 10 MOhm 500 V DC
Power Dissipation In W	4.73 W
Ac Activation Response Time	10 ms
Ac Deactivation Response Time	20 ms
Typical Current Consumption	76 mA at 3.3 V DC 93.6 mA at 24 V DC
Current Consumption	<= 126 mA at 3.3 V DC <= 154.8 mA at 24 V DC
Mtbf Reliability	1700000 H
Protection Type	1 external fuse per group of channel0.5 A fast blow
Voltage Detection Threshold	> 164 V AC sensor OK < 80 V AC sensor fault
Status Led	1 LED (green) module operating (RUN) 1 LED per channel (green) channel diagnostic 1 LED (red) module error (ERR) 1 LED (red) module I/O
Net Weight	0.12 kg

Disclaimer: This documentation is not intended as a substitute for and is not to be used for determining suitability or reliability of these products for specific user applications

Environment

Ip Degree Of Protection	IP20
Directives	2014/35/EU - low voltage directive 2014/30/EU - electromagnetic compatibility
Dielectric Strength	1500 V AC at 50/60 Hz 1 min
Vibration Resistance	3 gn
Shock Resistance	30 gn
Ambient Air Temperature For Storage	-40...85 °C
Ambient Air Temperature For Operation	0...60 °C
Relative Humidity	5...95 % at 55 °C without condensation
Operating Altitude	0...2000 m 2000...5000 m with derating factor

Packing Units

Unit Type Of Package 1	PCE
Number Of Units In Package 1	1
Package 1 Height	5.500 cm
Package 1 Width	11.800 cm
Package 1 Length	11.800 cm
Package 1 Weight	156.000 g
Unit Type Of Package 2	S02
Number Of Units In Package 2	15
Package 2 Height	15.000 cm
Package 2 Width	30.000 cm
Package 2 Length	40.000 cm
Package 2 Weight	2.700 kg

Contractual warranty

Warranty	18 months
----------	-----------

Sustainability

Green Premium™ label is Schneider Electric's commitment to delivering products with best-in-class environmental performance. Green Premium promises compliance with the latest regulations, transparency on environmental impacts, as well as circular and low-CO₂ products.

Guide to assessing product sustainability is a white paper that clarifies global eco-label standards and how to interpret environmental declarations.

[Learn more about Green Premium >](#)

[Guide to assess a product's sustainability >](#)

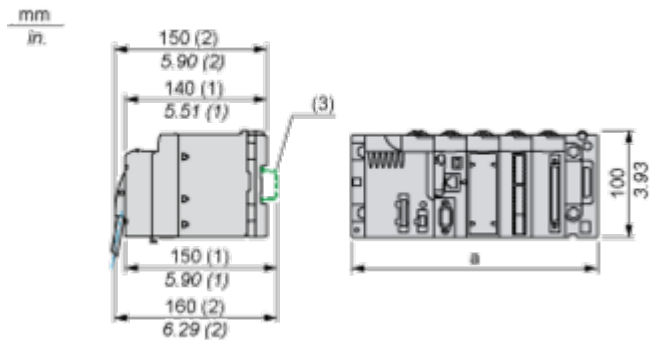
Well-being performance

 Mercury Free	
 Rohs Exemption Information	Yes
Reach Regulation	REACH Declaration
Eu Rohs Directive	Pro-active compliance (Product out of EU RoHS legal scope)
China Rohs Regulation	China RoHS declaration
Weee	The product must be disposed on European Union markets following specific waste collection and never end up in rubbish bins

Dimensions Drawings

Modules Mounted on Racks

Dimensions



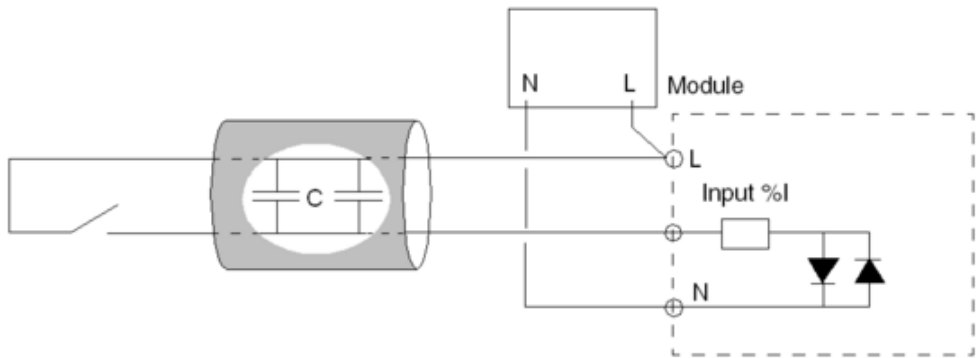
- (1) With removable terminal block (cage, screw or spring).
(2) With FCN connector.
(3) On AM1 ED rail: 35 mm wide, 15 mm deep. Only possible with BMXXBP0400/0400H/0600/0600H/0800/0800H rack.

Rack references	a in mm	a in in.
BMXXBP0400 and BMXXBP0400H	242.4	09.54
BMXXBP0600 and BMXXBP0600H	307.6	12.11
BMXXBP0800 and BMXXBP0800H	372.8	14.68
BMXXBP1200 and BMXXBP1200H	503.2	19.81

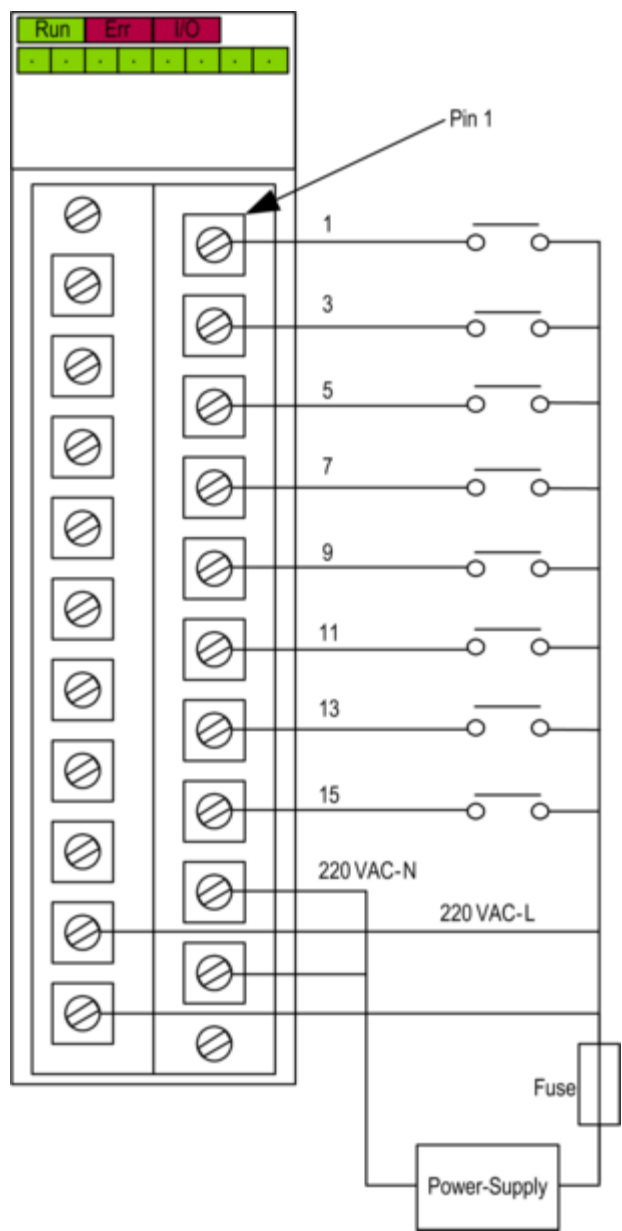
Connections and Schema

Connecting the Module

Input Circuit Diagram



Module Connection



power supply 200...240 VAC
fuse fast blow fuse of 0.5 A